

San Benito County Water District  
Groundwater Sustainability Agency  
Technical Advisory Committee

August 15, 2018

# Sustainable Groundwater Management Act (SGMA)

Landmark legislation in 2014

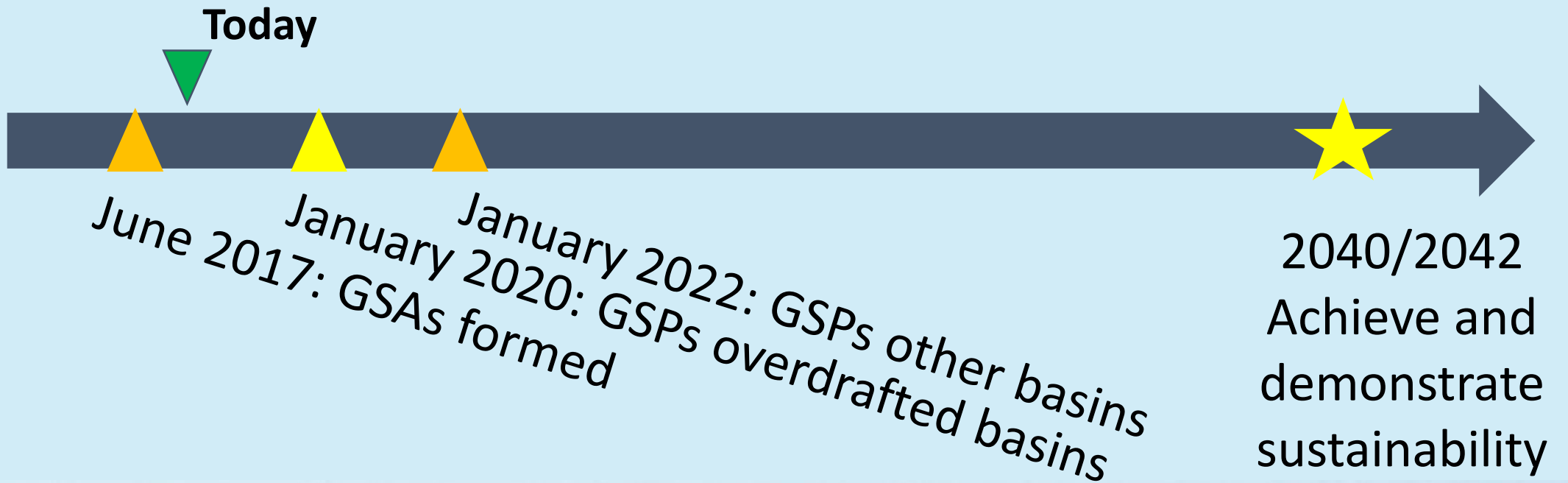
- Based on local control
- State assistance, and intervention if necessary

Includes comprehensive requirements for:

- Forming groundwater sustainability agencies (GSA)
- Preparing groundwater sustainability plans (GSP)
- Meeting deadlines

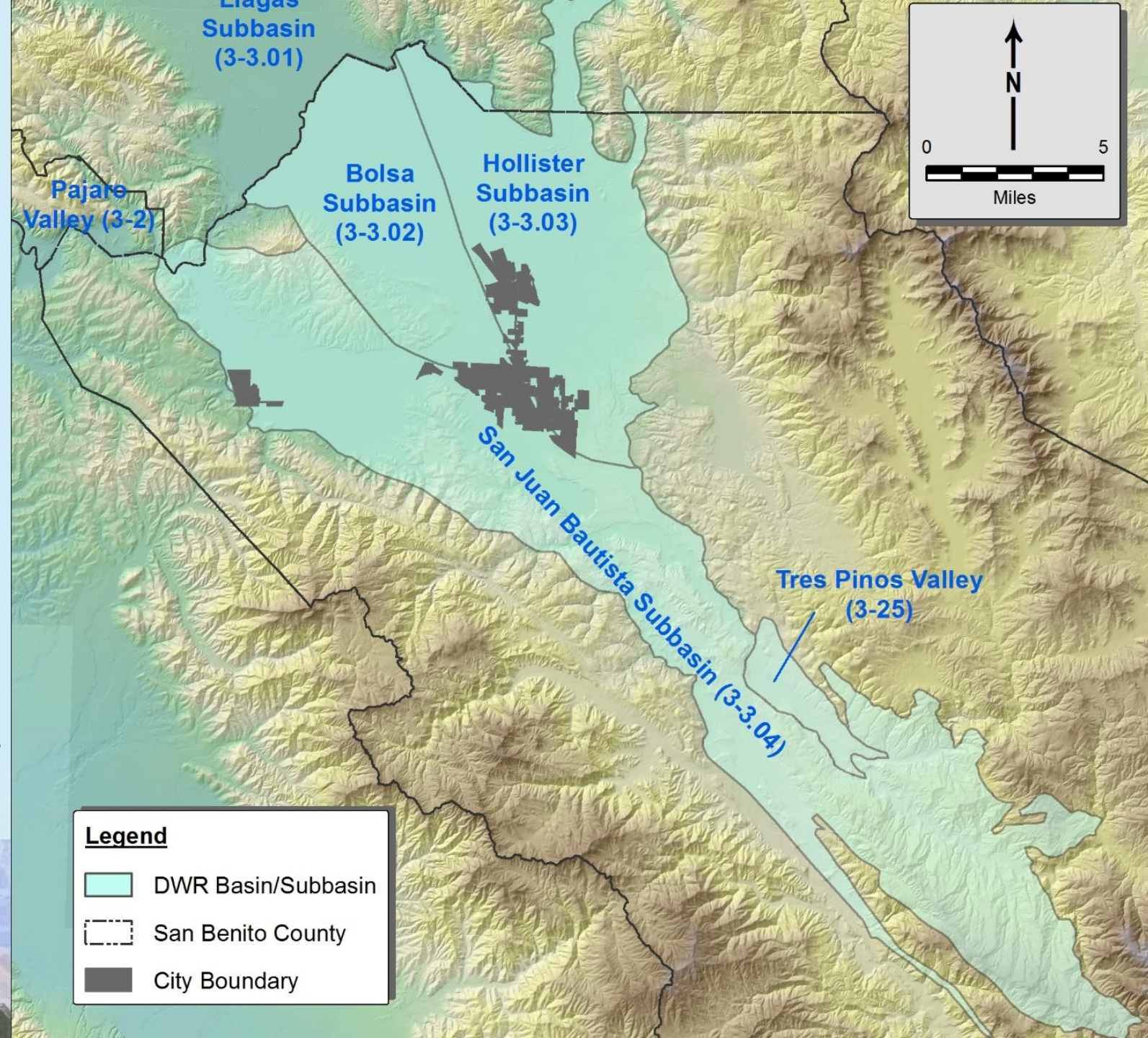


# SGMA has a required timeline



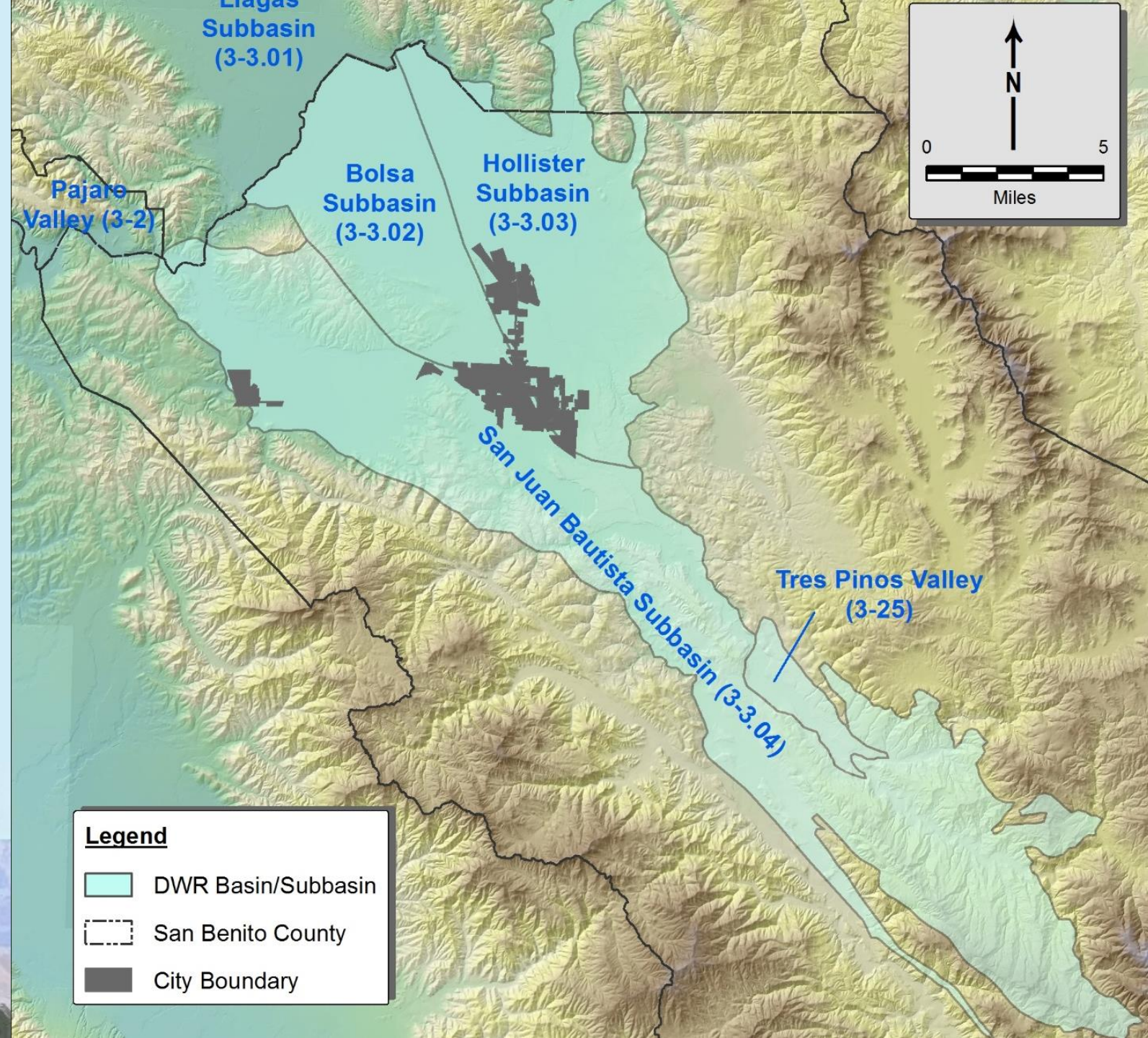
# Two GSAs are working together

- San Benito County Water District GSA
- Santa Clara County Water District GSA
- Four basins
- Memorandum of Agreement for cooperative planning, data sharing, coordinated outreach, and GSP preparation



# GSA's are seeking consolidation of the four basins

- Contiguous and connected
- Managed together historically
- Would allow preparation of one, unified GSP
- Announcement of draft DWR decision in Nov 2018



# Update from SBCWD GSA

- Awarded grant for \$830,000 for GSP preparation
- Assembled GSP team
- Created new website with SGMA page
- Initiated technical work on GSP



Groundwater Sustainability Agency  
San Benito County Water District

## Sustainable Groundwater Planning Grant

For the San Juan Bautista, Bolsa, Hollister  
Groundwater Basins

November 2017

TODD  
GROUNDWATER



# Summary of GSP Workplan and Schedule

# The GSP will build on existing management

- Management of local groundwater
- Development of local surface water supplies
- Importation of CVP water
- Water recycling and water conservation
- Monitoring
- Collaboration with local agencies
- Annual Groundwater Reports

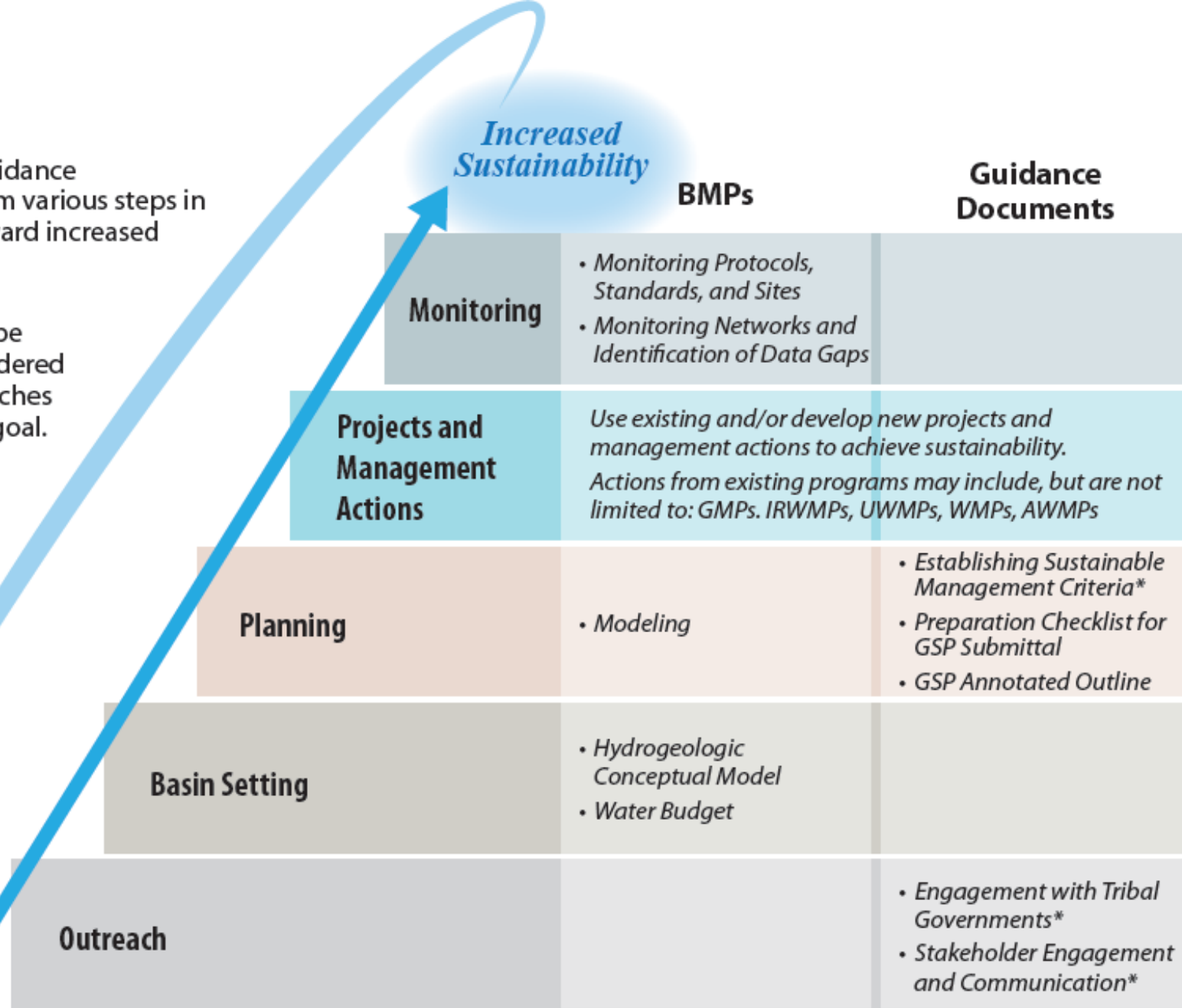




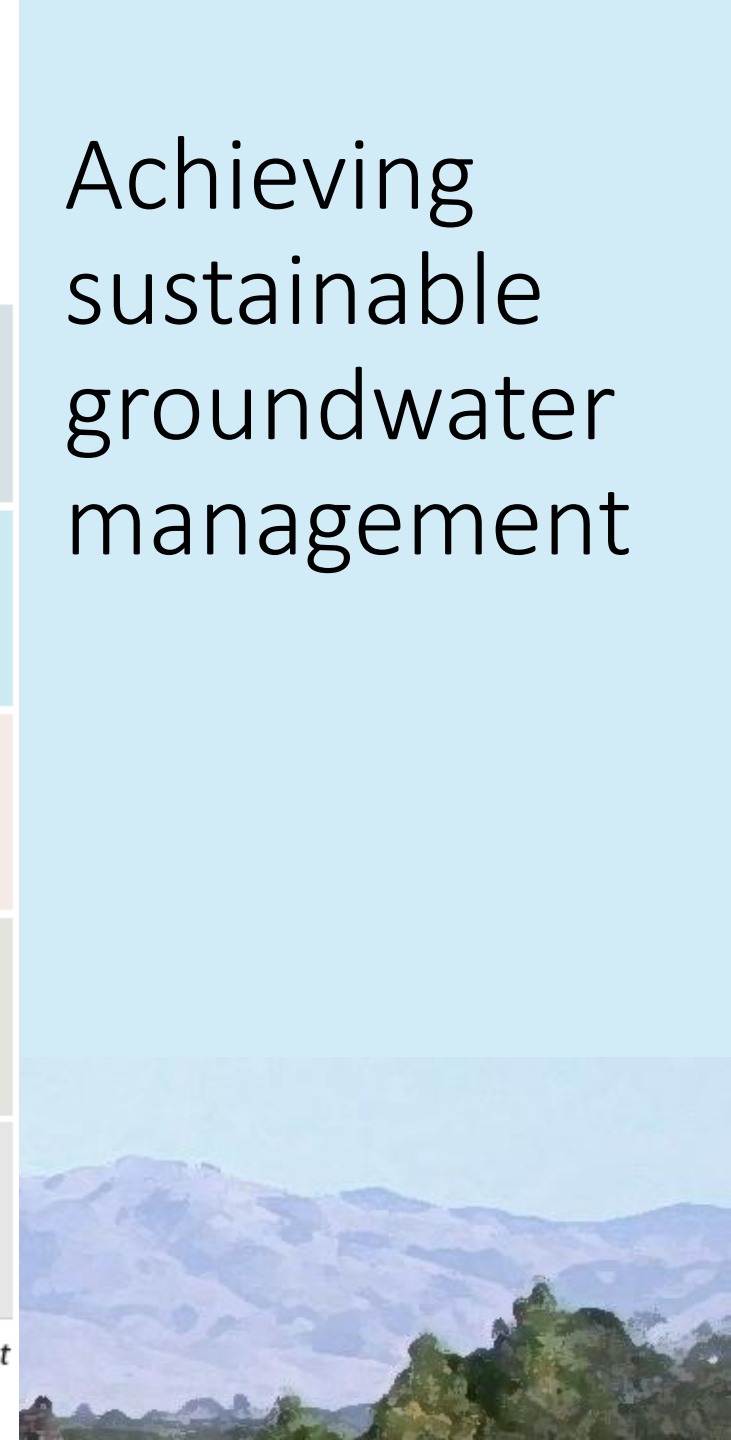
# Achieving sustainable groundwater management

The BMPs and Guidance Documents inform various steps in the workflow toward increased sustainability.

These steps may be repeated or re-ordered as a basin approaches its sustainability goal.



\* In Development



# What is Sustainable Groundwater Management?

The management and use of groundwater in a manner that can be maintained without causing *undesirable results*



# Undesirable results\* must be accounted



Chronic lowering of groundwater levels



Significant/unreasonable reduction of groundwater storage



Seawater intrusion (not applicable here)



Significant and unreasonable degraded water quality



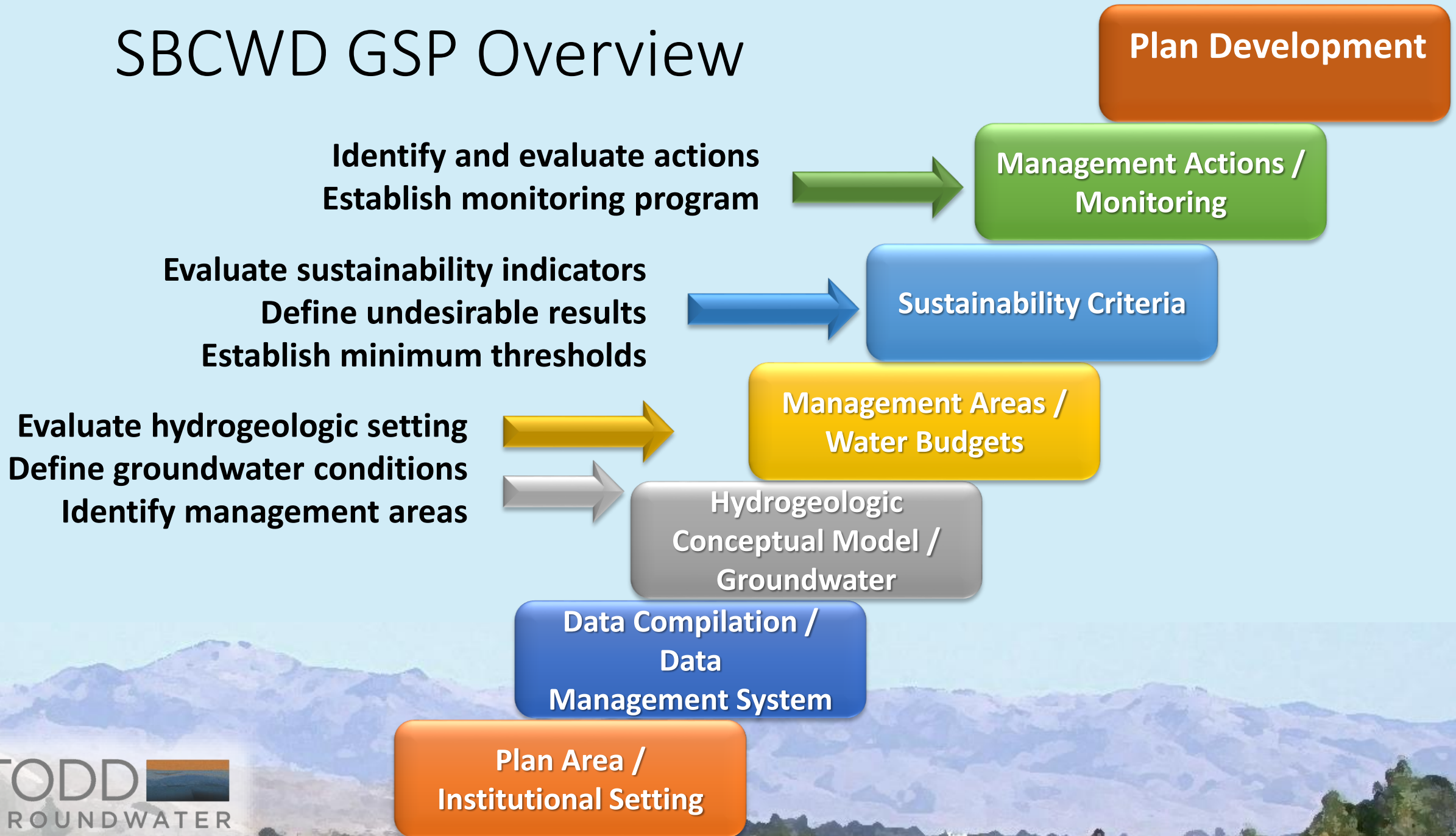
Land subsidence that substantially interferes with land uses



Depletions of connected surface water with impacts on beneficial uses

\* *aka Sustainability Criteria*

# SBCWD GSP Overview



2021

# GSP Overview and Schedule

**Plan Development**

2020

**Management Actions /  
Monitoring**

**Sustainability Criteria**

2019

**Management Areas /  
Water Budgets**

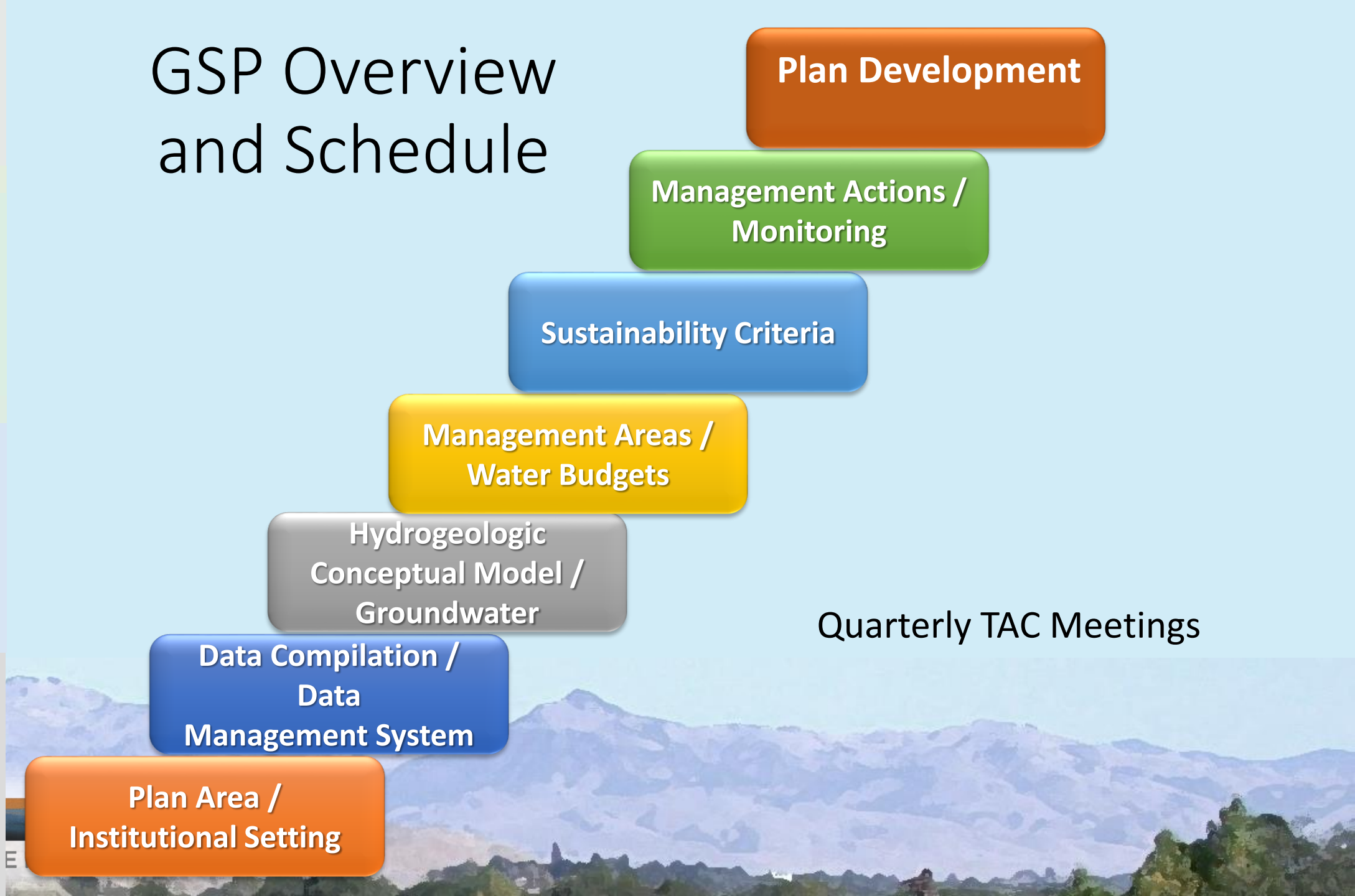
**Hydrogeologic  
Conceptual Model /  
Groundwater**

Quarterly TAC Meetings

2018

**Data Compilation /  
Data  
Management System**

**Plan Area /  
Institutional Setting**



2021

# GSP Overview and Workshops

**Plan Development**

Adoption hearing  
Draft GSP workshop

2020

**Management Actions /  
Monitoring**

Evaluate actions workshop

**Sustainability Criteria**

Management options workshop

2019

**Management Areas /  
Water Budgets**

Sustainability criteria workshop

**Hydrogeologic  
Conceptual Model /  
Groundwater**

GW Conditions workshop

**Data Compilation /  
Data  
Management System**

Kickoff workshop

2018

**Plan Area /  
Institutional Setting**



# Role of the Technical Advisory Committee

- ❖ Assist in developing a technically sound GSP by representing GSP-related subject areas
- ❖ Work collaboratively with TAC and GSA staff
  - Participate in regular meetings
  - Review GSP scope of work
  - Review draft products and materials
  - Provide recommendations

# GSA Organization

